

# PROLIAD

## LED LIGHTING

Light efficiency:

23 Lumen/Watt

Light quality:

CRI: 71,9

Color temperature:

5408 K

Output: 397 lm

Peak: 698 cd

Power: 17,0 W

PF: 0,90



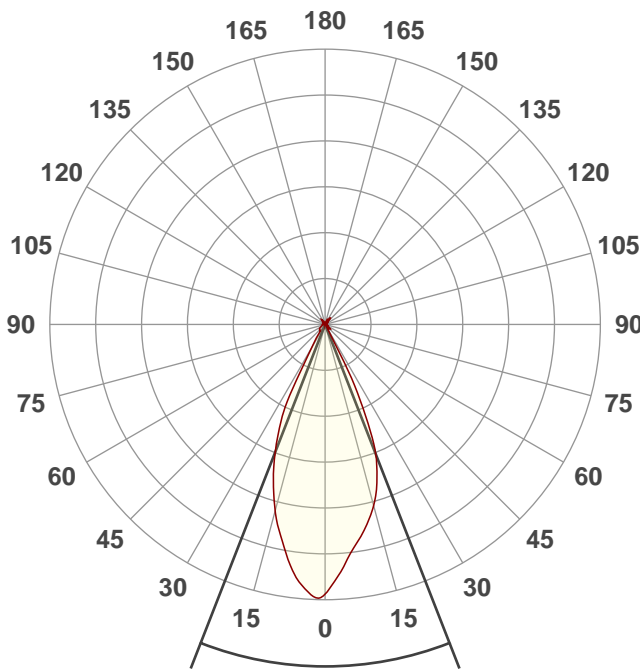
Product name:  
**GOBO XL Wit Wide**

Date and time:  
**29-6-2022 17:14:33**

Item number:  
**900 000731**

Minimum order quantity:  
**1**

Additional information:  
**LED Engin 40W RGBW**



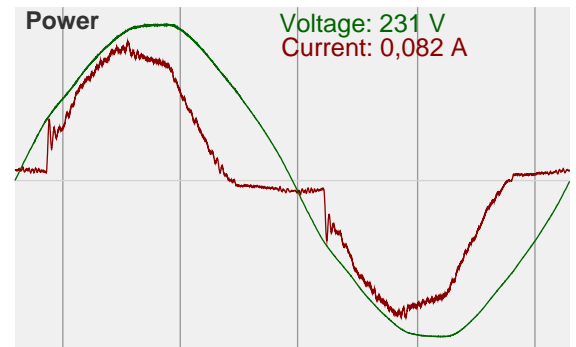
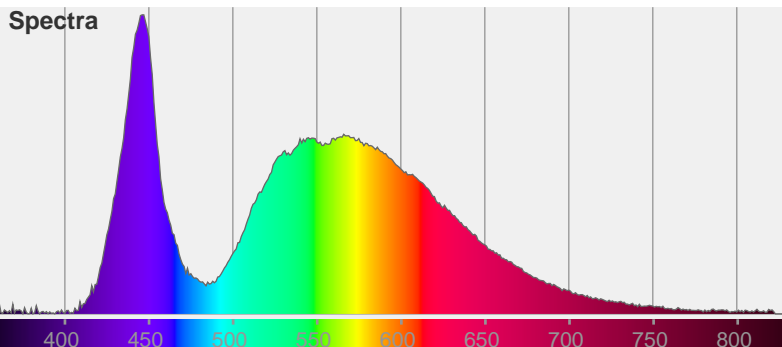
Beam angle

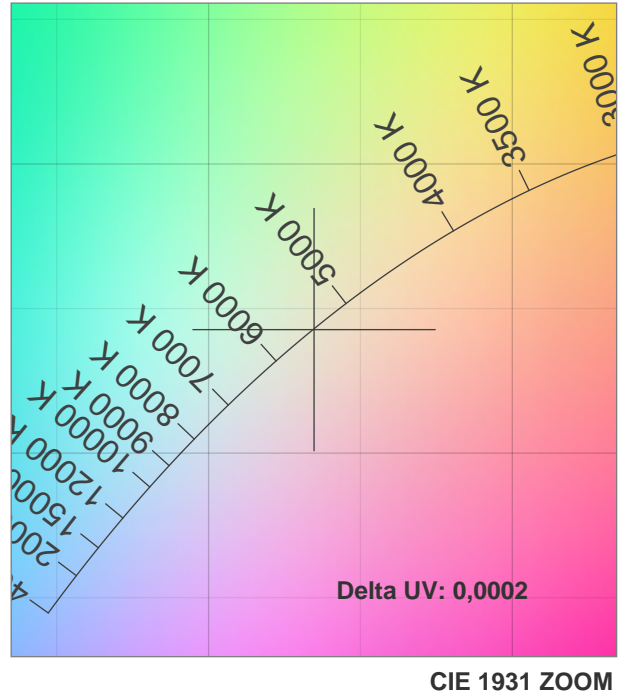
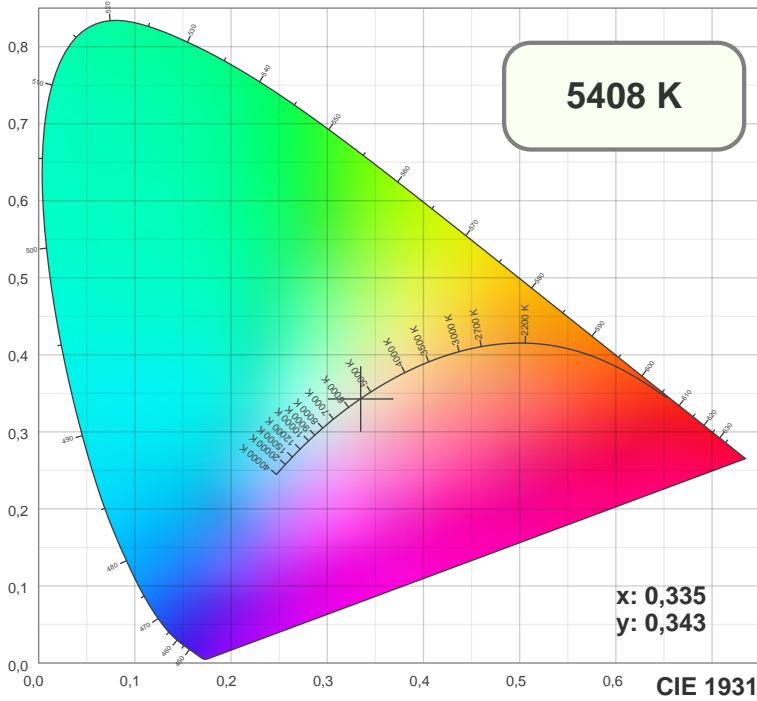
**42,7°**

Color

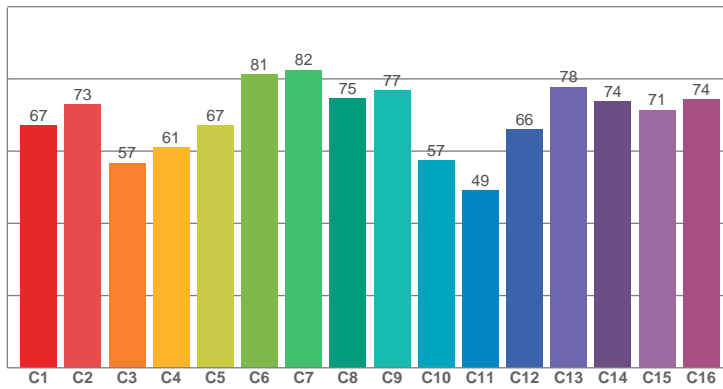


CIE1931  
x: 0,335  
y: 0,343

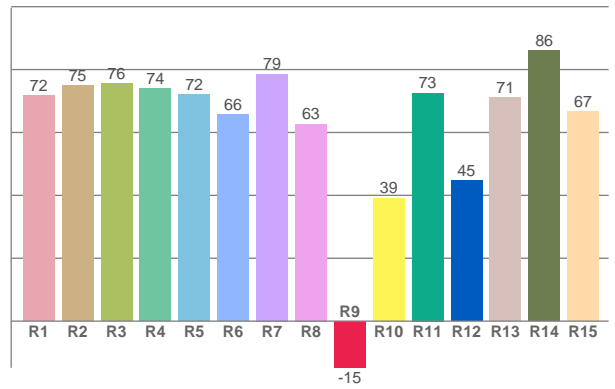




TM30: 68,6



CRI: 71,9 (R1-R8)



CRI R values, only R1-R8 are used to calculate final CRI value

R1	R2	R3	R4	R5	R6	R7	R8	R9	R10	R11	R12	R13	R14	R15
71,66	74,95	75,68	74,06	72,07	65,80	78,63	62,73	-14,84	39,20	72,54	44,76	71,04	85,96	66,64

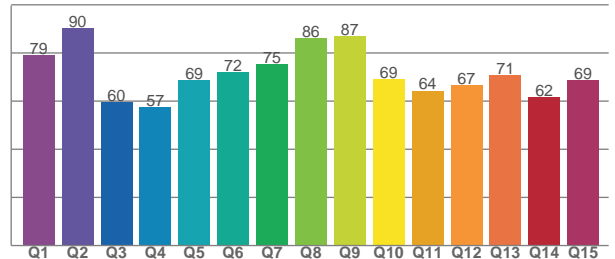
TM30 C values, 16 binned values out of total of 99 C values

C1	C2	C3	C4	C5	C6	C7	C8	C9	C10	C11	C12	C13	C14	C15	C16
67,08	72,92	60,93	60,93	67,15	81,18	82,45	74,54	76,78	57,35	49,20	65,94	77,75	73,80	71,41	74,25

CQS Q values

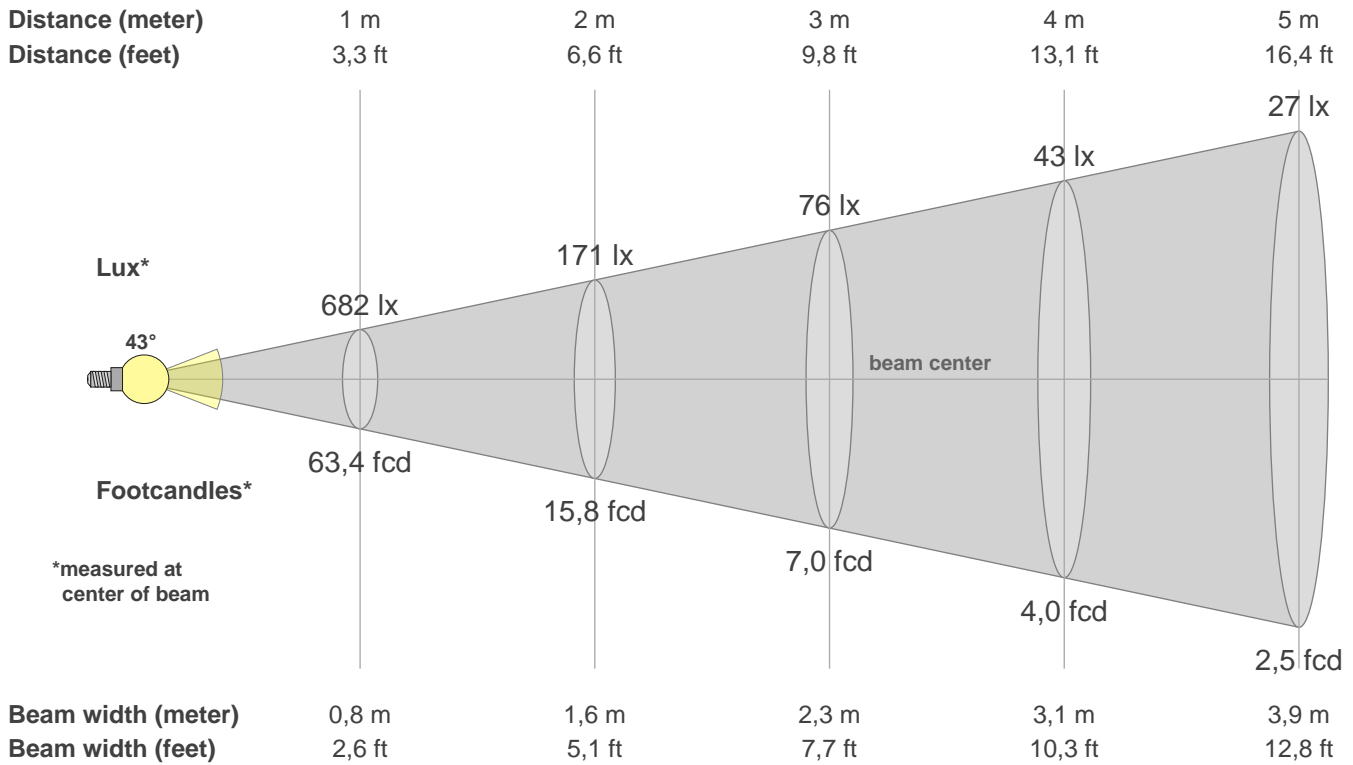
Q1	Q2	Q3	Q4	Q5	Q6	Q7	Q8	Q9	Q10	Q11	Q12	Q13	Q14	Q15
79,17	90,48	59,72	57,36	68,86	71,92	75,29	86,13	87,06	69,08	64,38	66,68	70,64	61,55	68,86

CQS: 70,2



## Color parameters

CCT	CRI	CRI R9	TM30 Rf	TM30 Rg	CQS	x	y	u	v	Duv
5408 K	71,9	-14,8	68,6	96,5	70,2	0,3	0,3	0,2	0,3	-0,0034



### Intensities in 0° c-plane

0°	2°	4°	6°	8°	10°	12°	14°	16°	18°	20°	22°	24°	26°	28°	30°	32°	34°	36°	38°
682	655	626	593	567	543	518	491	461	425	381	333	250	164	80	15	15	15	14	13
100%	96%	92%	87%	83%	80%	76%	72%	68%	62%	56%	49%	37%	24%	12%	2%	2%	2%	2%	2%

### Intensities in 0° c-plane

0°	2°	4°	6°	8°	10°	12°	14°	16°	18°	20°	22°	24°	26°	28°	30°	32°	34°	36°	38°
682	655	626	593	567	543	518	491	461	425	381	333	250	164	80	15	15	15	14	13
100%	96%	92%	87%	83%	80%	76%	72%	68%	62%	56%	49%	37%	24%	12%	2%	2%	2%	2%	2%

### Intensities in 180° c-plane

0°	2°	4°	6°	8°	10°	12°	14°	16°	18°	20°	22°	24°	26°	28°	30°	32°	34°	36°	38°
682	691	676	655	624	586	549	513	470	426	382	333	280	224	153	81	50	34	23	22
100%	101%	99%	96%	91%	86%	80%	75%	69%	62%	56%	49%	41%	33%	22%	12%	7%	5%	3%	3%

### Intensities in 180° c-plane

0°	2°	4°	6°	8°	10°	12°	14°	16°	18°	20°	22°	24°	26°	28°	30°	32°	34°	36°	38°
682	691	676	655	624	586	549	513	470	426	382	333	280	224	153	81	50	34	23	22
100%	101%	99%	96%	91%	86%	80%	75%	69%	62%	56%	49%	41%	33%	22%	12%	7%	5%	3%	3%

Beam angle 50%	Field angle 10%	Cutoff angle 2,5%	Intensity ratio in 120° cone	Intensity ratio in 90° cone
42,7°	58,6°	200,1°	83,5%	78,4%