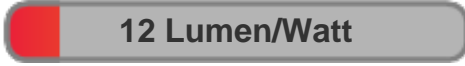


PROLIAD

LED LIGHTING

Light efficiency:



Light quality:



Color temperature:



Output: 168 lm
Peak: 280 cd
Power: 14,3 W
PF: 0,89



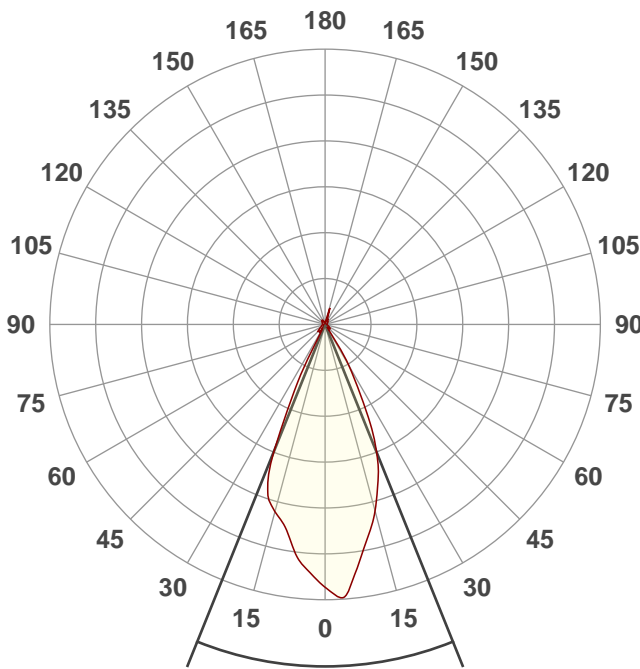
Product name:
GOBO XL Road Wide

Date and time:
29-6-2022 17:07:48

Item number:
900 000731

Minimum order quantity:
1

Additional information:
LED Engin 40W RGBW



Beam angle

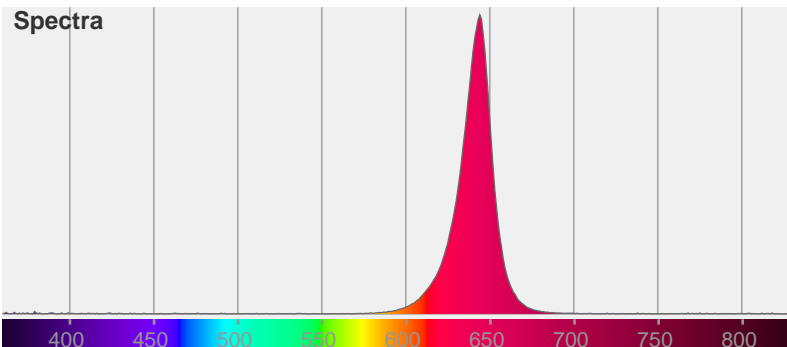
43,9°

Color

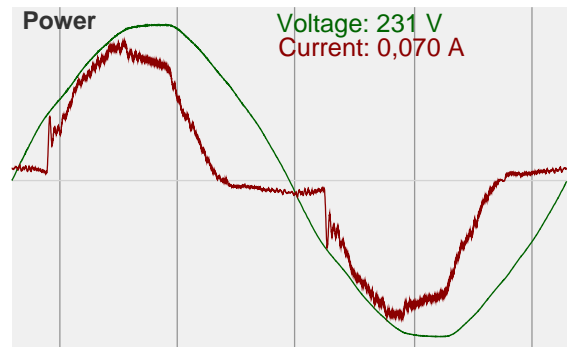


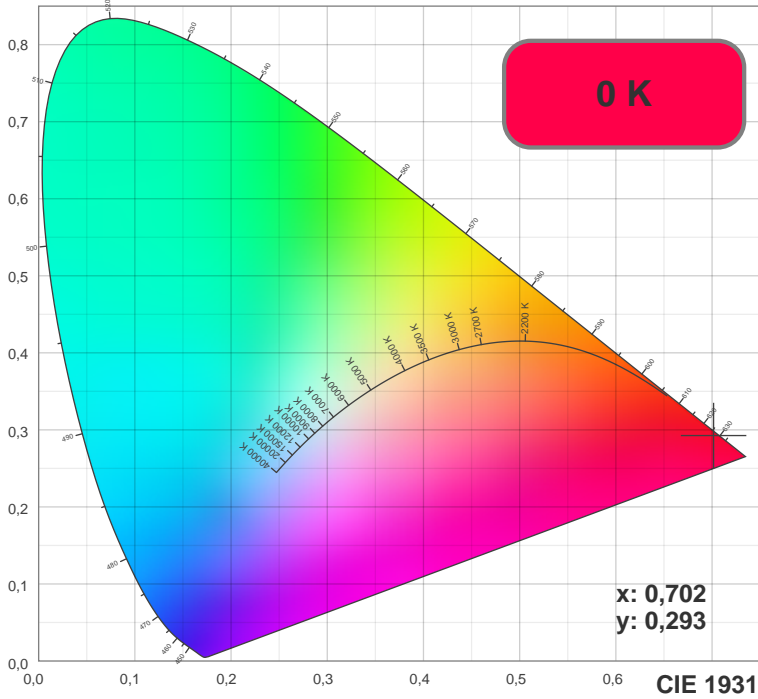
CIE1931
x: 0,702
y: 0,293

Spectra



Power





TM30: 0,0

0	0	0	0	0	0	0	0	0	0	0	0	0	0	0	0
C1	C2	C3	C4	C5	C6	C7	C8	C9	C10	C11	C12	C13	C14	C15	C16

CRI R values, only R1-R8 are used to calculate final CRI value

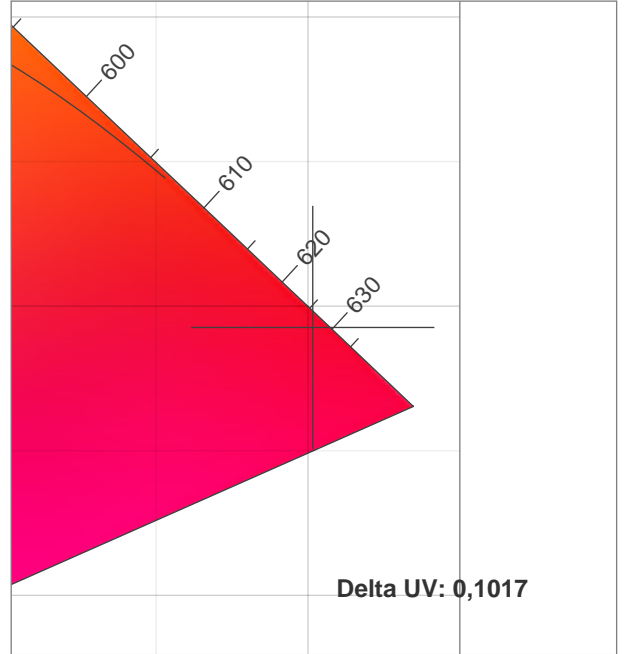
R1	R2	R3	R4	R5	R6	R7	R8	R9	R10	R11	R12	R13	R14	R15
0,00	0,00	0,00	0,00	0,00	0,00	0,00	0,00	0,00	0,00	0,00	0,00	0,00	0,00	0,00

TM30 C values, 16 binned values out of total of 99 C values

C1	C2	C3	C4	C5	C6	C7	C8	C9	C10	C11	C12	C13	C14	C15	C16
0,00	0,00	0,00	0,00	0,00	0,00	0,00	0,00	0,00	0,00	0,00	0,00	0,00	0,00	0,00	0,00

CQS Q values

Q1	Q2	Q3	Q4	Q5	Q6	Q7	Q8	Q9	Q10	Q11	Q12	Q13	Q14	Q15
0,00	0,00	0,00	0,00	0,00	0,00	0,00	0,00	0,00	0,00	0,00	0,00	0,00	0,00	0,00



CIE 1931 ZOOM

CRI: 0,0 (R1-R8)

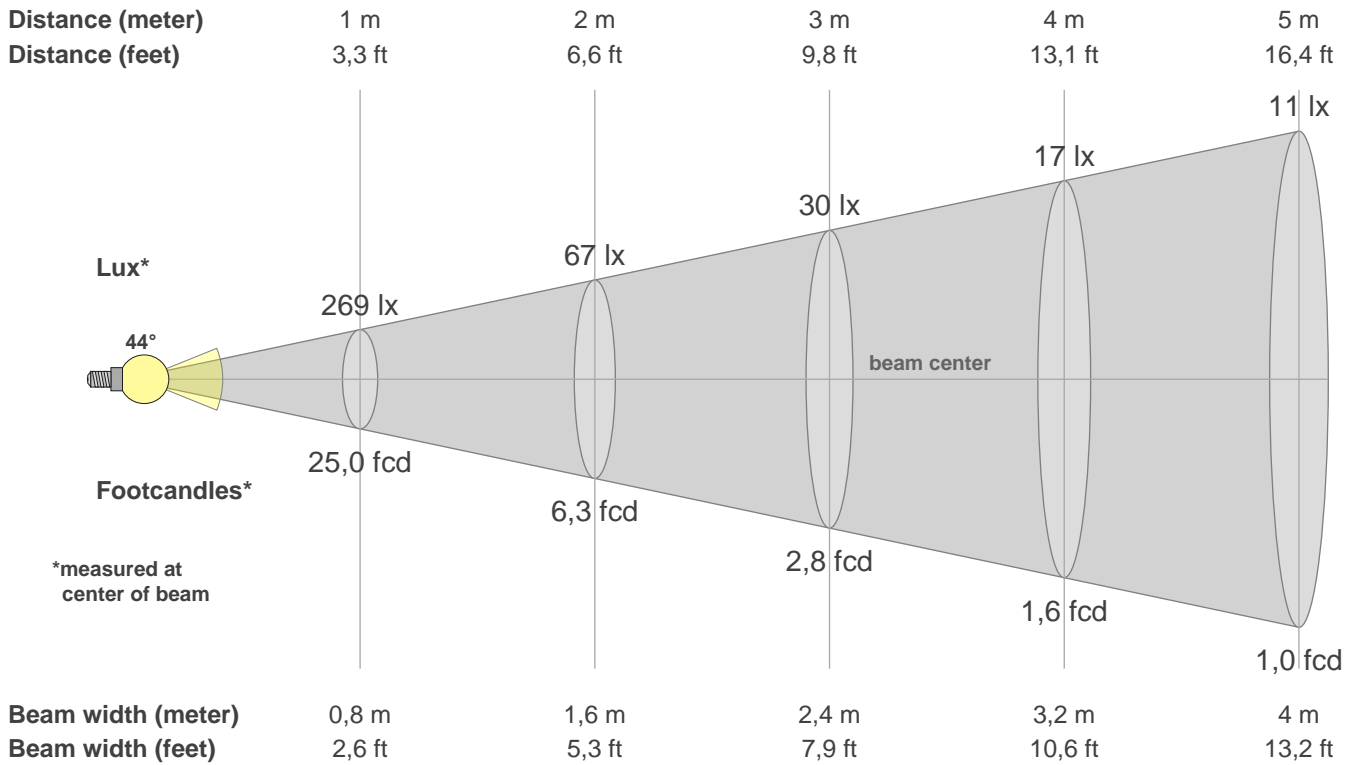
0	0	0	0	0	0	0	0	0	0	0	0	0	0	0	0
R1	R2	R3	R4	R5	R6	R7	R8	R9	R10	R11	R12	R13	R14	R15	

CQS: 0,0

0	0	0	0	0	0	0	0	0	0	0	0	0	0	0	0
Q1	Q2	Q3	Q4	Q5	Q6	Q7	Q8	Q9	Q10	Q11	Q12	Q13	Q14	Q15	

Color parameters

CCT	CRI	CRI R9	TM30 Rf	TM30 Rg	CQS	x	y	u	v	Duv
0 K	0,0	0,0	0,0	0,0	0,0	0,7	0,3	0,5	0,3	NaN



Intensities in 0° c-plane

0°	2°	4°	6°	8°	10°	12°	14°	16°	18°	20°	22°	24°	26°	28°	30°	32°	34°	36°	38°
269	275	280	264	248	232	219	205	190	174	159	140	117	94	72	49	28	7	6	6
100%	102%	104%	98%	92%	86%	81%	76%	70%	65%	59%	52%	44%	35%	27%	18%	10%	3%	2%	2%

Intensities in 0° c-plane

0°	2°	4°	6°	8°	10°	12°	14°	16°	18°	20°	22°	24°	26°	28°	30°	32°	34°	36°	38°
269	275	280	264	248	232	219	205	190	174	159	140	117	94	72	49	28	7	6	6
100%	102%	104%	98%	92%	86%	81%	76%	70%	65%	59%	52%	44%	35%	27%	18%	10%	3%	2%	2%

Intensities in 180° c-plane

0°	2°	4°	6°	8°	10°	12°	14°	16°	18°	20°	22°	24°	26°	28°	30°	32°	34°	36°	38°
269	261	253	244	233	219	209	202	195	186	167	139	96	55	22	9	9	10	10	10
100%	97%	94%	91%	86%	81%	78%	75%	72%	69%	62%	52%	36%	21%	8%	3%	4%	4%	4%	4%

Intensities in 180° c-plane

0°	2°	4°	6°	8°	10°	12°	14°	16°	18°	20°	22°	24°	26°	28°	30°	32°	34°	36°	38°
269	261	253	244	233	219	209	202	195	186	167	139	96	55	22	9	9	10	10	10
100%	97%	94%	91%	86%	81%	78%	75%	72%	69%	62%	52%	36%	21%	8%	3%	4%	4%	4%	4%

Beam angle 50%	Field angle 10%	Cutoff angle 2,5%	Intensity ratio in 120° cone	Intensity ratio in 90° cone
43,9°	59,6°	221,3°	81,9%	76,9%